

PART OF S 1/2 SEC. 33, T.7 N., R.1 W., S.L.B. & M:  
**GREENFIELD SUBDIVISION PHASE 2**

155

LOTS 17 -- 26

NORTH OGDEN CITY

SCALE 1" TO 50'

TAXING UNIT: 10

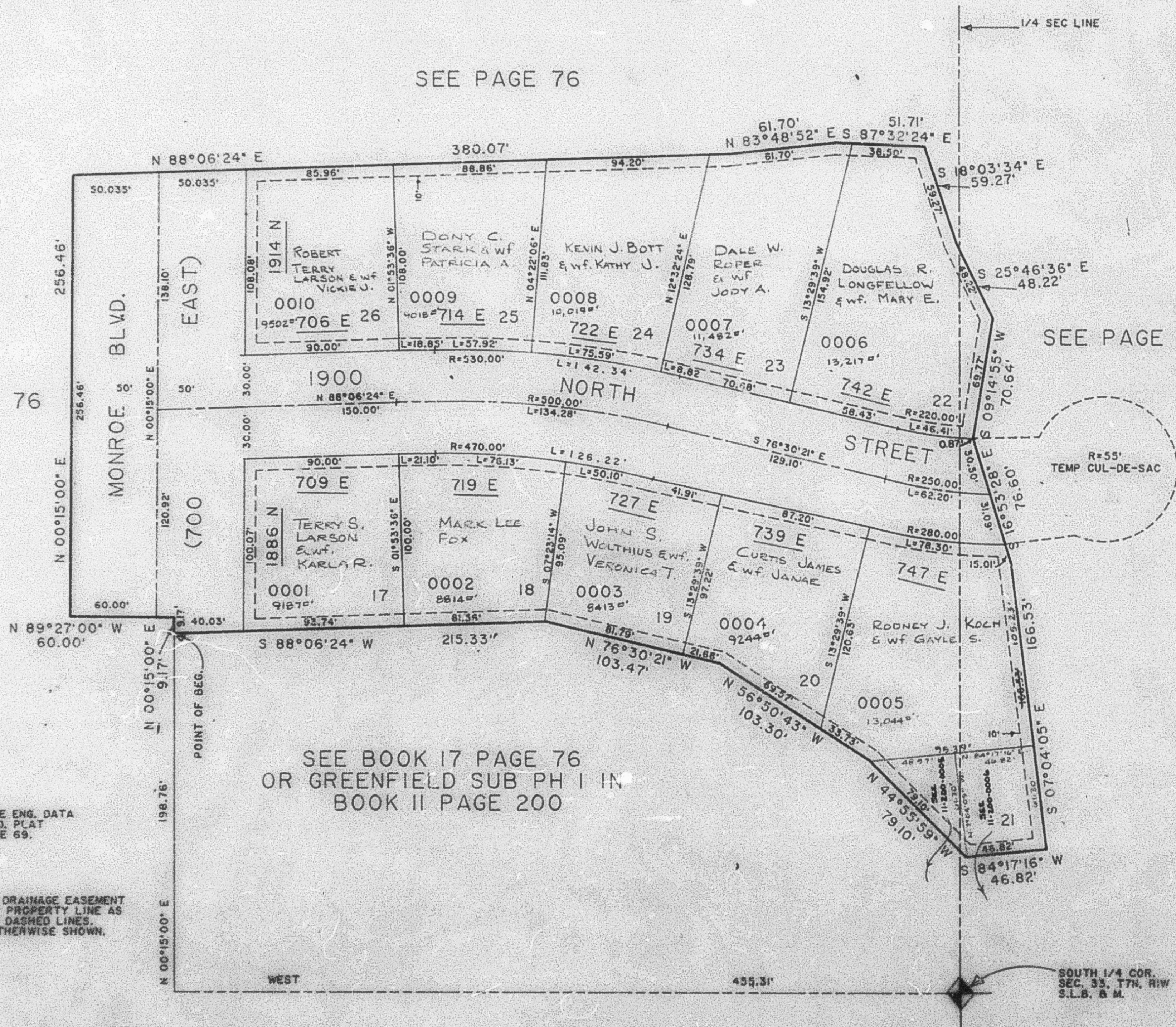
PREFIX: 17-155

EXCEPT WHERE OTHERWISE SHOWN  
 ALL LOTS OWNED BY:  
 J. A. W. INVESTMENT CO.

SEE PAGE 76

SEE PAGE 75

SEE PAGE 76



FOR COMPLETE ENG. DATA  
 SEE ORIG. DEED PLAT  
 BOOK 27, PAGE 69.

7' UTILITY & DRAINAGE EASEMENT  
 EACH SIDE OF PROPERTY LINE AS  
 INDICATED BY DASHED LINES,  
 EXCEPT AS OTHERWISE SHOWN.